



INSEAD

Master Programmes

Master in Management

Together, we achieve.



The Business School
for the World®

The INSEAD MIM Advantage

Highly ranked by the *Financial Times*, the INSEAD MIM aims to empower the next generation of well-rounded, agile-thinking, and innovative individuals who are ready to make a positive impact in today's society.

Top-Ranked Business School

INSEAD is one of the world's leading and largest graduate business schools whose master programmes are consistently ranked amongst the top by the *Financial Times*.

Focus on the Results

Engage with a global network of top recruiters to launch your career in a broad range of roles and industries.

Global Community

Join a global network of over 70,000 influential alumni working in more than 180 countries across the world. Engage with the INSEAD community and gain valuable advice through various student life activities and clubs allowing you to further expand your network reach.

International Exposure

Immerse yourself in a truly global experience alongside international classmates and faculty, and travel across continents.

Learn by Doing and In-Demand Skills

Experience a fast-paced succession of classes, workshops and practicals that put to test the application of classroom learnings to real-life situations brought by business partners and entrepreneurs. Develop skills, and acquire managerial and technical know-how designed to address the current needs of employers, bringing modern solutions to today's challenges.

Unparalleled Diversity

Educational diversity is key to learning. You'll find classmates with different academic backgrounds, work experience and nationalities - each one telling their own story to enhance your knowledge of the world.



An Exceptional Future Awaits

The INSEAD Master in Management (MIM) programme combines an innovative learning approach with a problem-solving orientation. The 14 to 16-month intense and diverse programme is designed to equip young graduates with a holistic set of skills to launch a successful career in any work environment.

Class of 2026



202
Students



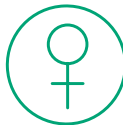
23
Average Age



10
Average Months of
Work or Internship
Experience



33
Nationalities



43%
Women



I was particular about attending a business school that has produced many others before me who have similarly challenged the status quo."

Sultan Sunmola
Nigerian
Management Assistant
MIM'23

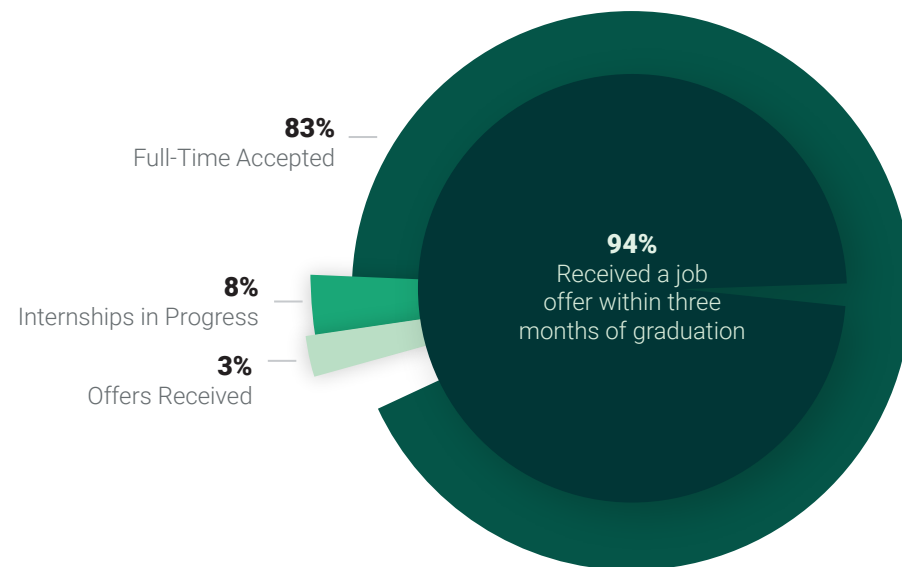


This environment fuels my energy and motivation to come every day to study and fully engage in the activities."

Lily Unell
Swiss
Consultant
MIM'24



Employment Statistics 2023



US\$ 55,200
Median annual salary post-graduation



The INSEAD Career Development Centre (CDC) provided guidance on how to best craft my job application documents and prepare for my job interviews."

Christian Edwin Pranata
Indonesian
Strategy Analyst
MIM'21

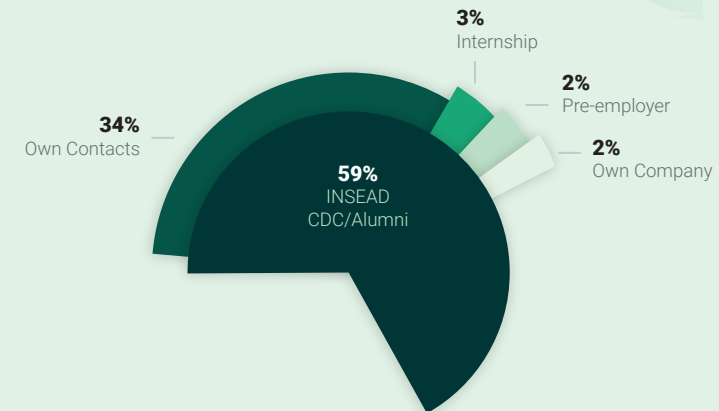


I believe that businesses are the one thing that can drive great change in the world. I knew I needed to gain a better understanding of how businesses are run, which led me to look into MIMs."

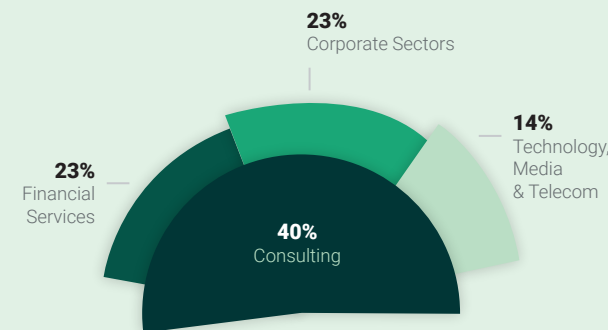
Yuko May
Japanese, German
Associate
MIM'23



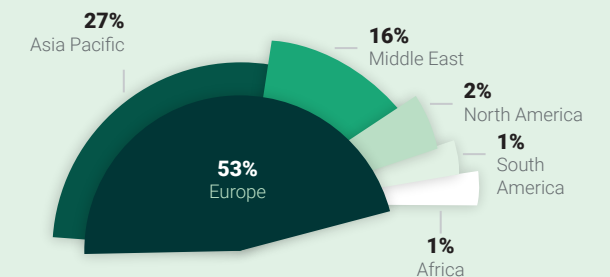
Job Source



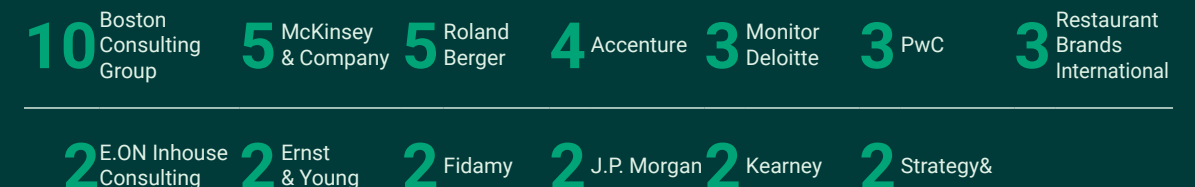
Sector



Geographies



Class of 2023 Top Recruiters



Visit our website to explore the Employment Statistics report: <https://insead/mim/career-stats>

The INSEAD Experience

Join a broad and diverse community of learners to build lifelong memories through an intense, immersive and engaging learning journey.

Core Courses

Follow 12 case-based core courses led by INSEAD's renowned faculty on a broad range of topics, covering all aspects that are relevant for a leader in today's business world.

Workshops

Acquire essential practical skills that are highly sought-after by global recruiters through a series of specialised blended workshops.

Practicals

Conclude each period with a fast-paced, highly experiential module that puts classroom learnings to the test on concrete issues. You will gain the practical experience you need to make a difference in the workplace from day one.

Career Coaching and Employer Engagement

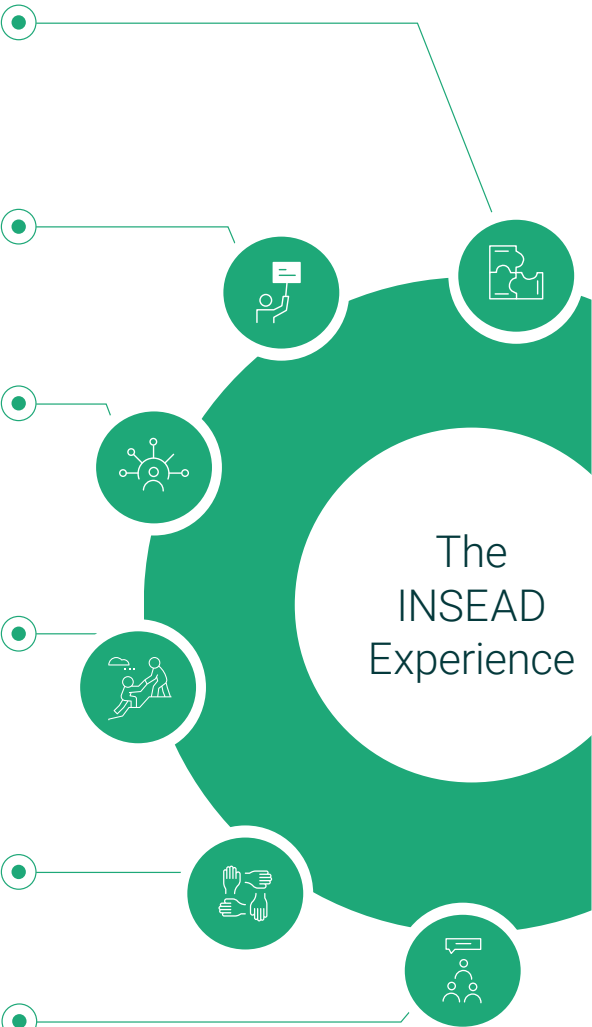
Receive the guidance of a dedicated career coach to help you work through your career journey. Engage actively with recruiters across sectors to build the first step of your career.

Group Work

Engage with a diverse group of talented individuals who bring their unique perspectives to complement yours.

Community

Build lifelong connections through the support of a vibrant, innovative and inclusive community.



Student Life

MIM students have a wide choice of community, cultural and sporting activities available on and off campus.

• More than 40 Student Clubs

• Social Events and Activities

• Cultural Festivals:
A Celebration of Cultural Diversity

• Four Milestone Events

• Student Wellbeing

• Settling-in Support:
Visas, Health Insurance, etc.



Working on groups and projects at INSEAD allowed me to quickly adapt and integrate myself at work."

Disha Arya

Indian
International Project Manager
MIM'21



INSEAD's commitment to diversity, its global approach, and its hallmark of excellence deeply resonated with my aspirations."

Hussein Ezzeddine


Lebanese, Ivorian
Senior Financial Analyst
MIM'24



Your Course Timeline



Period	Period	Period	Period	Period	Period	Professional Exposure
0	1	2	3	4	5	
<div>Online Foundations</div> <ul style="list-style-type: none">• Career Curriculum• Programming Essentials in Python• Art of Communication• Optional Language Courses• Integrated Problem-solving	<div>Launch Week (Mid-August Start)</div> <ul style="list-style-type: none">• L.E.A.D Seminar• Leadership Bootcamp <div>3 Core Courses</div> <ul style="list-style-type: none">• Data Analysis• Financial Accounting• Marketing <div>1 Workshop</div> <ul style="list-style-type: none">• Corporate Communications	<div>3 Core Courses</div> <ul style="list-style-type: none">• Machine Learning & Optimisation• Principles of Finance and Valuation• Applied Microeconomics <div>2 Workshops</div> <ul style="list-style-type: none">• Executive Slide Design• Negotiations	<div>3 Core Courses</div> <ul style="list-style-type: none">• Managerial Accounting• Process & Operation Management• Business & Society <div>1 Workshop</div> <ul style="list-style-type: none">• Project Management	<div>3 Core Courses</div> <ul style="list-style-type: none">• Strategy• Macroeconomics• Working in Teams	<div>6 Electives</div> <div>Choose your electives from a wide range of topics</div> <div>Sample electives:</div> <ul style="list-style-type: none">• Sustainable Finance• New Business Ventures• FinTech	<div>Conclude your MIM journey by joining a company, either as an intern or a full-time employee, and applying what you have learned. This professional exposure period allows you to build work experience and conduct a sustainability analysis on the industry you have joined.</div>

 INSEAD's Faculty is actively researching sustainability and the world's most pressing issues. While sustainability is taught through most INSEAD courses, some courses have a particular focus on sustainability and are indicated with this icon.

<div>1 Practical</div> <ul style="list-style-type: none">• Leveraging Data for Marketing Science	<div>1 Practical</div> <ul style="list-style-type: none">• BBB Deals / Valuing Innovation	<div>1 Practical</div> <ul style="list-style-type: none">• Sustainability and Business Model Innovation	<div>1 Practical</div> <ul style="list-style-type: none">• Blue Ocean Strategy	<div>1 Practical</div> <ul style="list-style-type: none">• Sustainable Development Goals Bootcamp
--	---	---	--	---

<div>Career Continuum</div>	<div>Year-round career events from one-on-one career coaching, career education workshops, sector advisory, as well as events involving various sectors from consulting, tech, financial services, corporates, and energy.</div>
-----------------------------	--

<div>Field trip option: Abu Dhabi or San Francisco*</div> <ul style="list-style-type: none">• Doing Business in the Middle East• Entrepreneurship in Silicon Valley	<div>Field trip option: China or Singapore*</div> <ul style="list-style-type: none">• Innovation in China• Singapore Business Ecosystem
--	--

Curriculum is subject to change.

*Students need to complete one field trip in order to graduate. Subject to visa requirements.

Connecting the World's Professionals

Our mission is to bring together people, cultures and ideas to develop responsible leaders who transform business and society.

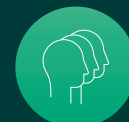
Be part of a global network that embodies our **five founding values**:



Independence



Rigour &
Relevance



Diversity



Entrepreneurial
Spirit



Closeness
to Business

An Ecosystem That Nurtures Success:

World-Class Faculty

- 159 world-leading experts from 40+ nationalities
- Scholars and practitioners who conduct research that pushes the frontiers of business knowledge
- Frequently named on the prestigious *Thinkers50* list

Strong Alliances & Partnerships

- CEIBS
- INSEAD-Wharton Alliance
- Kellogg
- Sorbonne University
- Tsinghua University
- Yale's Global Network for Advanced Management

Enriching Student Life

- Launch Week/Cultural Festivals
- Over 40 Student Clubs
- Student-led Conferences
- INSEAD Partners Community

Centres & Initiatives

INSEAD conducts research and provides insights that shape management practice in 19 centres and initiatives, including:

- The Hoffmann Global Institute for Business & Society
- The Rudolf and Valeria Maag INSEAD Centre for Entrepreneurship
- The Gender Initiative
- The Blue Ocean Strategy Institute

INSEAD Launchpad

An accelerator initiative for alumni start-ups to:

- Receive advice and funding
- Receive support to scale and extend their reach
- Join events where successful entrepreneurs share insights

Practicals: Preparing You for the Working World

A two-week module has been integrated into each period to help you gain the hands-on skills you will need to succeed in the real world.

During these modules you learn to put into practice all your classroom teachings through simulations, real-life business situations, and projects from partnering companies.

Beyond classroom learning, the practicals allow you to showcase your skills and receive feedback from real organisations to give you a head start in your career.

What You Can Expect from a Practical: Learning, Strengthening and Application

Learning New Skills Lectures

- Learn to use new tools
- Review what you have learned from core courses
- Reinforce your skills

Business Knowledge Company Presentation and Case

- Gather industry knowledge
- Understand how real companies work
- Network with company representatives

Your Turn to Try Group Case, Simulation and Presentation

- Build your teamwork capability
- Practise your problem-solving skills
- Refine



The whole INSEAD process of learning prepares you for the real business world you will enter. I have never gone through such a stimulating learning experience."

Manon Barnes
French, British
Community Host
MIM'24



Your Journey Starts Here

Admissions Process

All elements of your application will be thoroughly reviewed by the Admissions Team. The selection process is on a rolling basis that will take up to seven weeks from the date of completed application submission.



Admissions Criteria

The MIM Admissions Team is looking for candidates with intellectual curiosity, personal qualities to contribute to the many INSEAD activities and very strong international motivation.

Ability to Contribute

How you can contribute to the INSEAD experience during and after the programme.

Academic Performance and Ability

Good academic record and GMAT Exam or GRE results.

International Motivation

Adaptability and flexibility in a multicultural environment.

Application Rounds

Your application will be evaluated as soon as it is complete, including your two recommendation letters, irrespective of when you apply. Final decisions are released at any point of time within seven weeks of you submitting a complete application.

Round	Aug 2025 Intake
1	01 Oct 2024
2	10 Dec 2024
3	25 Feb 2025
Final	29 Apr 2025

Financing and Scholarships

Tuition Fees

Tuition fees* for the current intake are as follows:

€52,500

The fees are payable by instalments.

*Fees are subject to change.
Please refer to the [INSEAD website](#) for the latest updates.

Scholarships

The INSEAD MIM yields a lifetime of dividends, both professionally and personally. Pursuing a MIM programme is an investment that needs to be carefully considered and the MIM Financial Aid Office offers advice and support in planning your financing for the INSEAD MIM programme.

INSEAD offers the following types of scholarships:

Achievement Scholarships

Focuses on excellence in academics and personal achievements.

Diversity Scholarships

Granted to candidates who bring diversity to the class in terms of background, personal experience and profile.

All admitted candidates will automatically be considered for the Diversity and Achievement scholarships (no separate application required). Successful candidates will be notified after their admission to the programme if they have been awarded a scholarship.



Admitted students are also eligible to apply for tuition financing from the following:

**brain
cap!tal**
braincapital.de

Lendwise
lendwise.com

Prodigy[®]
Finance
prodigyfinance.com

Join Our Global Community

Connect with members of the INSEAD community and learn more about the INSEAD MIM programme at one of our upcoming events.

Find an event near you:



<https://inse.ad/mim-events>

INSEAD Europe Campus

Boulevard de Constance
77305 Fontainebleau Cedex, France
T +33 (0)1 60 72 40 00

INSEAD Asia Campus

1 Ayer Rajah Avenue
Singapore 138676
T +65 6799 5388

INSEAD Middle East Campus

Al Khatem Tower, Al Maryah Island
ADGM Square
P.O. Box 48049
Abu Dhabi - UAE
T +971 2 651 5200

INSEAD San Francisco Hub for Business Innovation

224 Townsend Street
San Francisco, CA 94107, USA
T +1 888 546 7323



Email: mim.info@insead.edu

Website: insead.edu/mim

